



USER GUIDE

REV-1.01A

January 9th, 2009

<http://www.flatmii.com>



1 What's FLATMII and how to use it

FLATMII is the latest high specs device introducing a new playing way on the wii video game console, it allows Wii/Gamecube/Iso9660 image sharing from your pc, you can share movies, mp3, and anything else the Wii can run when using some kind of player or emulator.

Flatmii has two different ways of being installed on your wii videoconsole :

COMBO DRIVE/FLATMII : wii + flatmii + drive

The **combo mode** uses the wii dvd drive just as a original wii .You activate this mode when opening/closing the flatmii's PC software or by unplugging the flatmii usb cable from your pc ,use this mode to play your original wii/gamecube discs or dvd backups when your wii has a installed chip .

Flatmii is always initialized on combo drive/flatmii mode if the pc software is not running on the pc and meanwhile you don't open any iso, as soon as you do this flatmii gets in standalone mode, combo drive/flatmii mode is auto initialized when after the pc software gets closed

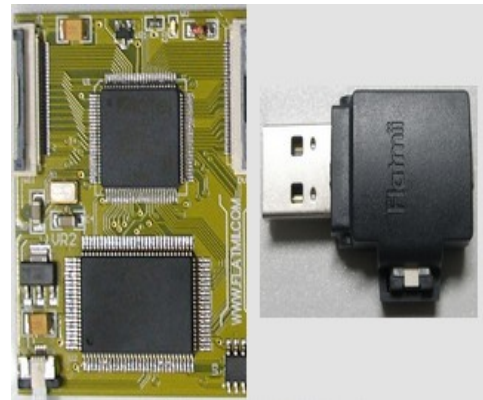
STANDALONE : wii + flatmii

This **standalone** mode doesn't need your wii dvd drive connected, it's highly recommended if you wii dvd drive is broken or damaged, you can even remove the broken/damaged drive from your wii.



2 Features

- No solder required
- No drivemod required
- No clip required
- No software required
Plug and Play
- ALL chipsets compatible including EPOXY'd and D3 drives
- 100% Compatible with drivemods
- STANDALONE mode (No wii drive/media needed)
- COMBO drive/flatmii mode
- Highspeed USB 2.0 fast loadings
- Wii/Gamecube/ISO9660/Multi & DL ISOS compatible
- Region free
- Updates blocker
- Wii iso remote tool selector



Requirements :

800 Mhz Speed Processor

1 Gbyte Ram

USB 2.0

Windows XP/Vista + Framework 2.0

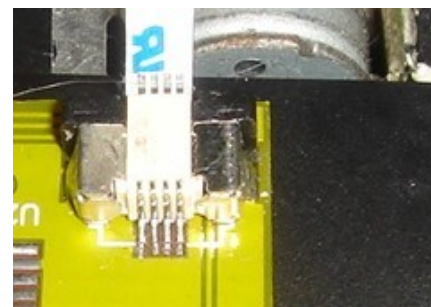
This minimum requirements has been tested with Flatmii.we cannot confirm if a lower configuration works flawlessly with the device.



3 Installation

3.1 COMBO DRIVE/FLATMII mode

1. Fix the supplied sticker on the bottom side of the flatmii's mainboard . Add some electrical tape over the place where you're holding the board . Use a safe location to avoid any electrical short circuit,!!**THIS IS VERY IMPORTANT!!** or you can damage the drive or other wii console part
2. Fix the flatmii with a few parts of double side fix tape,and place the main board WII marked connector at parallel with the drive flat connector
3. Plug the EXTRA supplied wide flat cable inside the marked with DVD connector and plug the other side inside the drive connector (pass the cable under the flatmii's mainboard for a better comfortability)
4. Insert the wii's flat cable inside the marked with WII connector and the drive power white cable,test that everything is ok by powering on and checking how the flatmii led flicks after insert and read a game disc
5. Insert the supplied 4 pins small flat cable by opening carefully the small flap of the flatmii's small connector (check page 6)
6. Mount your dvd drive sending out the small cable throught someone of the holes (i.e.USB holes like on the picture) and close the wii enclosure





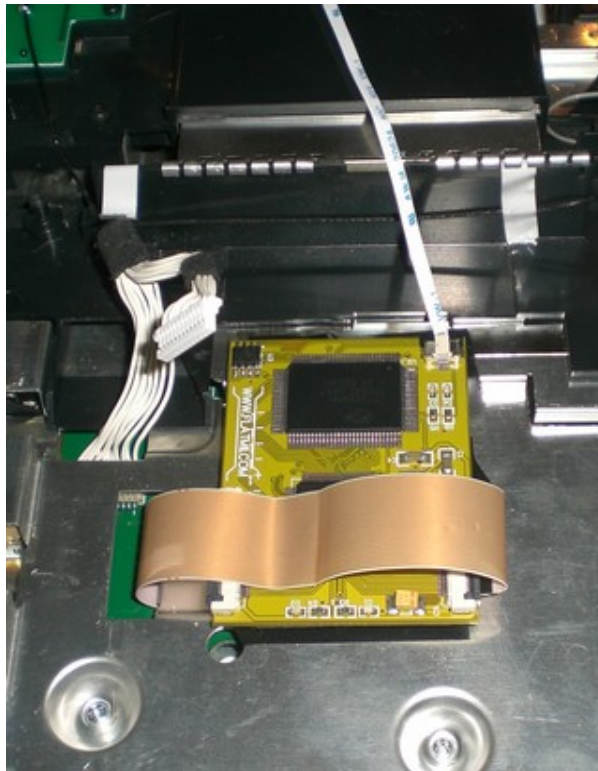
Installation Guide

Installation videotutorial ---> <http://www.youtube.com/watch?v=2oWkptnMf1M>

USB Dongle Installation ---> <http://www.youtube.com/watch?v=qSUIQPYjNPQ>

3.2 STANDALONE mode

1. Realize **COMBO DRIVE FLATMII/DRIVE** 1,2,4,5 mode steps and close the wii's enclosure sending out the small cable throught someone of the holes (i.e.USB holes)





Installation Guide

Installation videotutorial ---> <http://www.youtube.com/watch?v=6AwPWyh0OT8>

USB Dongle Installation ---> <http://www.youtube.com/watch?v=qSUIQPYJNPQ>

Once you've installed your flatmii and with your wii power source unplugged, insert the other side of the small cable inside the external miniconnector by opening the flap and pushing carefully ,close this flap , plug the connector at the wii's usb,it's time to plug a miniusb cable inside the miniconnector and pc , install the requested WINDOWS XP/VISTA driver and execute the flatmii's software

NOTE : Flatmii is able to be PC detected before install the mainboard at the wii , just do the USB dongle + flatmii 4 pins socket connection process , and connect the miniusb cable to your PC,this is the easiest way to install the XP/Vista drivers and check if anything is wrong at the flatmii unit before the installation inside the wii





4 PC Software User guide



3.3 Options

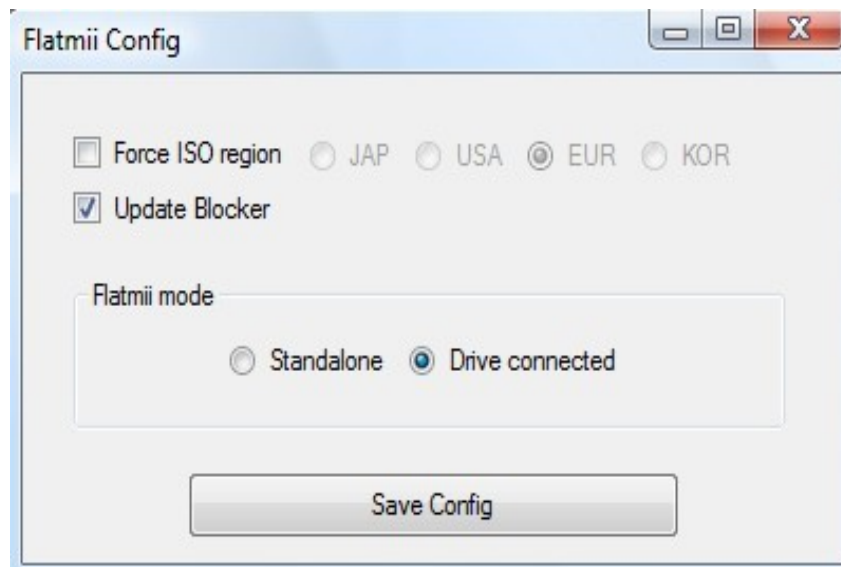
The software includes different options :

- **Open ISO** , Open a game disc or iso9660 (mp3,movie,etc.) ISO file and turn off the combo drive/flatmii mode
- **Open with autoboot** , Open a wii game disc ISO file and directly executes it without wait for wii menu or any user action . NOTE : Autoboot produces problems over a few games when starting them,backing to menu or if the CWF is in-game used . Retry function will require re-open same game disc iso with autoboot again



Installation Guide

- **Eject ISO** , produces same action as the wii's EJECT button
- **Setup** , opens the flatmii configuration submenu with the next options :



- **Forces ISO region JAP/USA/EUR/KOR** , force any game disc to the selected region
- **Updates blocker** , avoids the newer game discs update requests
- **Flatmii mode** , Standalone (with drive) or Drive connected (with drive)
- **Save config** , save a XML file with the selected configuration parameters inside the flatmii's application folder



3.4 Power energy modes

Flatmii supports windows XP/VISTA power energy save modes , a few disc games requires **HIGH PERFORMANCE** windows mode to play intro movies and high quality music perfectly . Power modes like **ECONOMY** or **LOW PERFORMANCE** reduces the processor and motherboard pc bus speed and could result in “in-game” video or audio performance issues

Close session . Prompts a “Insert Disc....” message on the wii console,just restart your session, and open the same game disc ISO file at the flatmii application

Log off PC . Prompts a “Insert Disc....” message on the wii console , turn on PC , restart windows , flatmii application and open the same game disc ISO file to continue the game

Suspend PC . When the suspend process is started , wii will prompt a “Insert Disc....” message , once you reactivate the PC and if the game is not autostarted (some games will make it) , you should unplug the usb cable , wait for “disconnected” message , reconnect the usb cable and reopen the same game disc ISO file

Enjoy Flatmii !!

FLATMII (C) 2008